

FSadventureSKY AIRWAYS.....

3 FULL CAPTAIN FLIGHTS



By Capt.Gera Godoy Canova

WELCOME Captain...

IMPORTANT: You should have flown the **3 CO-PILOT FLIGHTS (VA01-1.zip)** before flying THESE!!!!!!...or you will probably get a reprimand Memo from the Chief Pilot and Boss of all pilotos!!!!

OK....here we go again!!!! the airline is growing and you have been promoted to CAPTAIN....These three flights are to be done in the suggested aircraft..BUT if you dont have them or do not want to download them its OK...use your own equipment.

Flight 1....is a CARGO FLIGHT USING THE GOOD OLD 727...



do a routine check flight at Tocumen Airport before you embark into the real one....Check the CARIBIAN WEATHER (SEE BELOW) and GO...have a nice and maybe bumpy ride.

Flight 2is a PASSENGER FLIGHT and should be flown a a 737..



Remember to check the weather for the flight (see below)

FLIGHT 3...Is a LOCAL PASSENGER AND MAIL FLIGHT in Brazil and should be flown in an EMBRAER 170 OR 190



REMEMBER TO CHECK THE WEATHER....you should plan your flight and LAND IN AS MANY AIRPORTS BEFORE THE FINAL ONE...THIS IS A MILK RUN.

ENJOY THE FLIGHTS!!!!

FLIGHT 1....

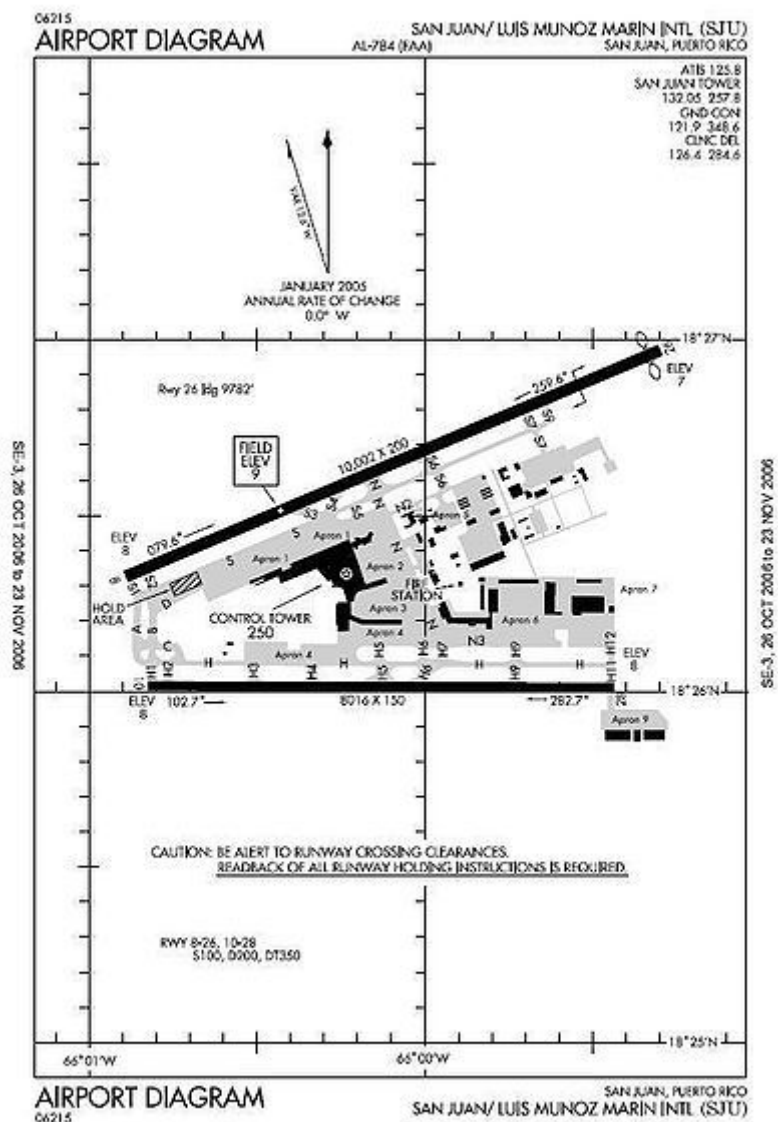
**TOCUMEN INTERNATIONAL TO LUIS MUÑOZ MARIN INTRL.
Panama city, Panama ---to--- Puerto Rico**

Tocumen International Airport (Spanish: Aeropuerto Internacional de Tocumen) (IATA: PTY, ICAO: MPTO) is an international airport located 15 mi (24 km) from Panama City, Panama. In 2006, it underwent a major expansion and renovation program in order to modernize and improve its facilities. It is currently the only airport in Central America with two runways for use and is also the largest airport in the country and the busiest in Central America by passenger traffic.



[http://www.tocumenpanama.aero/index.php?
cccpag=navegacion aerea](http://www.tocumenpanama.aero/index.php?cccpag=navegacion+aerea)

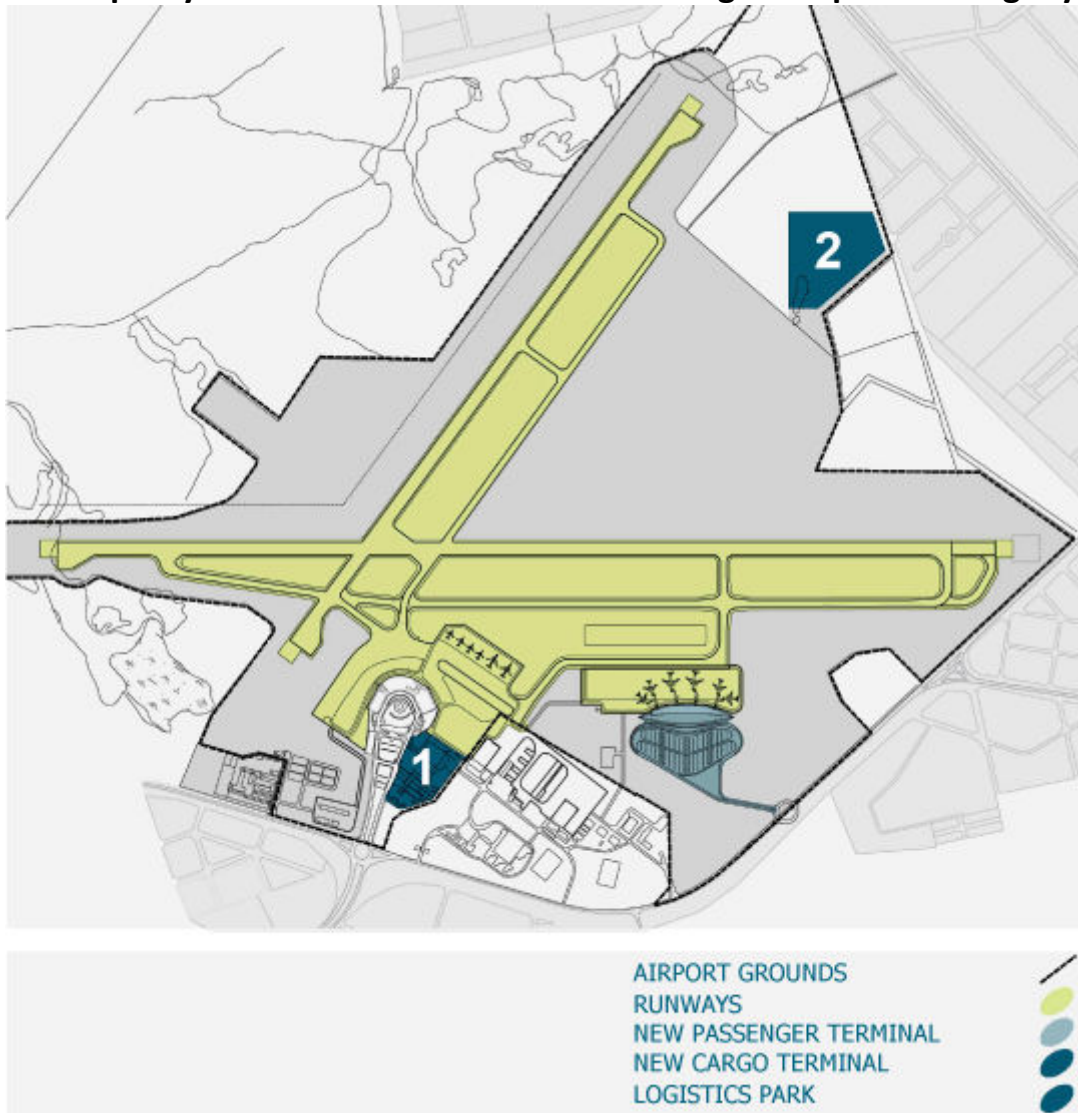
Luis Muñoz Marín International Airport (IATA: SJU, ICAO: TJSJ, FAA LID: SJU) is a joint civil-military public airport located in Carolina, Puerto Rico, three miles (five kilometers) southeast of San Juan.



FLIGHT 2

Montevideo, Uruguay to Ushuaia, Argentina

Carrasco/General Cesáreo L. Berisso International Airport (IATA: MVD, ICAO: SUMU), commonly known simply by Aeropuerto Internacional de Carrasco in reference to the neighborhood where it is located, is the main airport serving Montevideo, Uruguay, located in the adjoining municipality of Ciudad de la Costa. It is the largest airport in Uruguay.





Ushuaia International Airport (Spanish: Aeropuerto Internacional de Ushuaia) (IATA: USH, ICAO: SAWH) is located 4 km (2.5 mi) south of the center of Ushuaia, a city on the island of Tierra del Fuego in the Tierra del Fuego Province of Argentina. The Airport is also claimed by Argentina as the airport for the disputed Falkland Island.



FLIGHT 3

SANTOS DUMONT, Brazil --- TO--- MARTINS INTERL

Santos Dumont Airport (IATA: SDU, ICAO: SBRJ) is the second major airport serving Rio de Janeiro, Brazil. It is named after the Brazilian aviation pioneer Alberto Santos Dumont (1873-1932).



Pinto Martins International Airport (IATA: FOR, ICAO: SBFZ) is the airport serving Fortaleza, Brazil. It is named after Euclides Pinto Martins (1892–1924) a Ceará-born aviator, who in 1922 was one of the pioneers of the air-link between New York and Rio de Janeiro.





http://www.weather.com/maps/geography/southamerica/index_large.html

**THIS IS FREWARE AND MAY NOT BE USED IN ANY
COMMERCIAL PRODUCT!!!!**

Gera Godoy Canova
ggodoyc@fastmail.net