

AERODROME CHART

29°33'34"N  
034°57'33"E

ELEV 42 FT

TWR 121.80  
119.00

EILAT

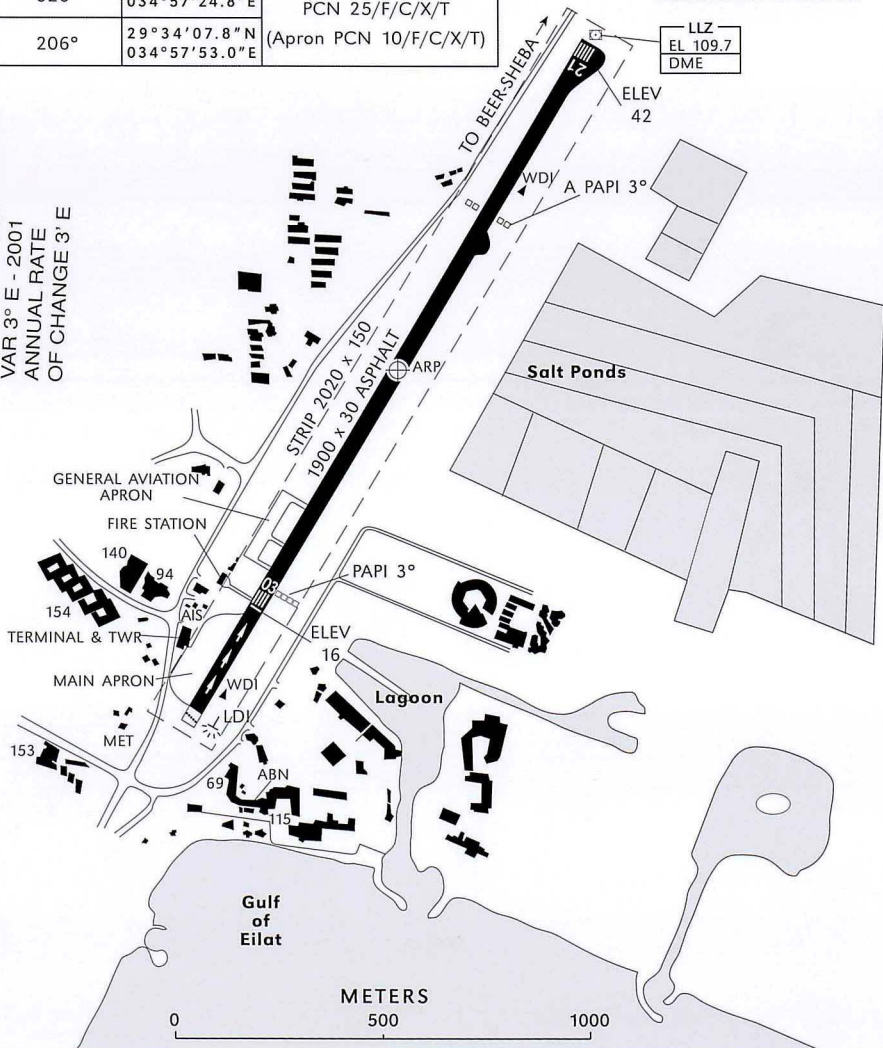
RWY	DIRECTION	THR	BEARING STRENGTH
03	026°	29°33'21.6"N 034°57'24.8"E	PCN 25/F/C/X/T (Apron PCN 10/F/C/X/T)
21	206°	29°34'07.8"N 034°57'53.0"E	

BEARINGS ARE MAGNETIC  
ELEVATIONS IN FEET  
DIMENSIONS IN METERS

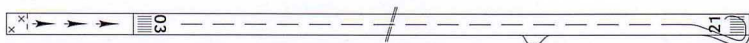
LLZ  
EL 109.7  
DME

N

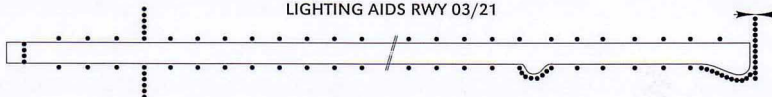
VAR 3° E - 2001  
ANNUAL RATE  
OF CHANGE 3" E



MARKING AIDS RWY 03/21



LIGHTING AIDS RWY 03/21



AIRCRAFT PARKING  
CHART

APRON ELEV 16 FT

TWR 121.80  
119.00

EILAT

FOR START-UP AND TAXI INSTRUCTION CALL TWR

PARKING OF JET AIRCRAFT ON POSITIONS  
7 TO 15 IS STRICTLY PROHIBITED

GENERAL AVIATION  
APRON

N  
VAR 3° E - 2002  
ANNUAL RATE  
OF CHANGE 3° E

FIRE STATION

AIS

TERMINAL

TWR

MAIN APRON

METERS

0 100 200

#### MOVEMENT ON THE APRON/RUNWAY AREA

PEOPLE AND/OR VEHICLES MOVING ALONG THE RUNWAY AND/OR THE APRON EAST OF THE PAINTED LINE DIVIDING THE APRON LONGITUDINALLY, SHALL MAINTAIN AT ALL TIMES TWO-WAY COMMUNICATION WITH 'EILAT TWR'.

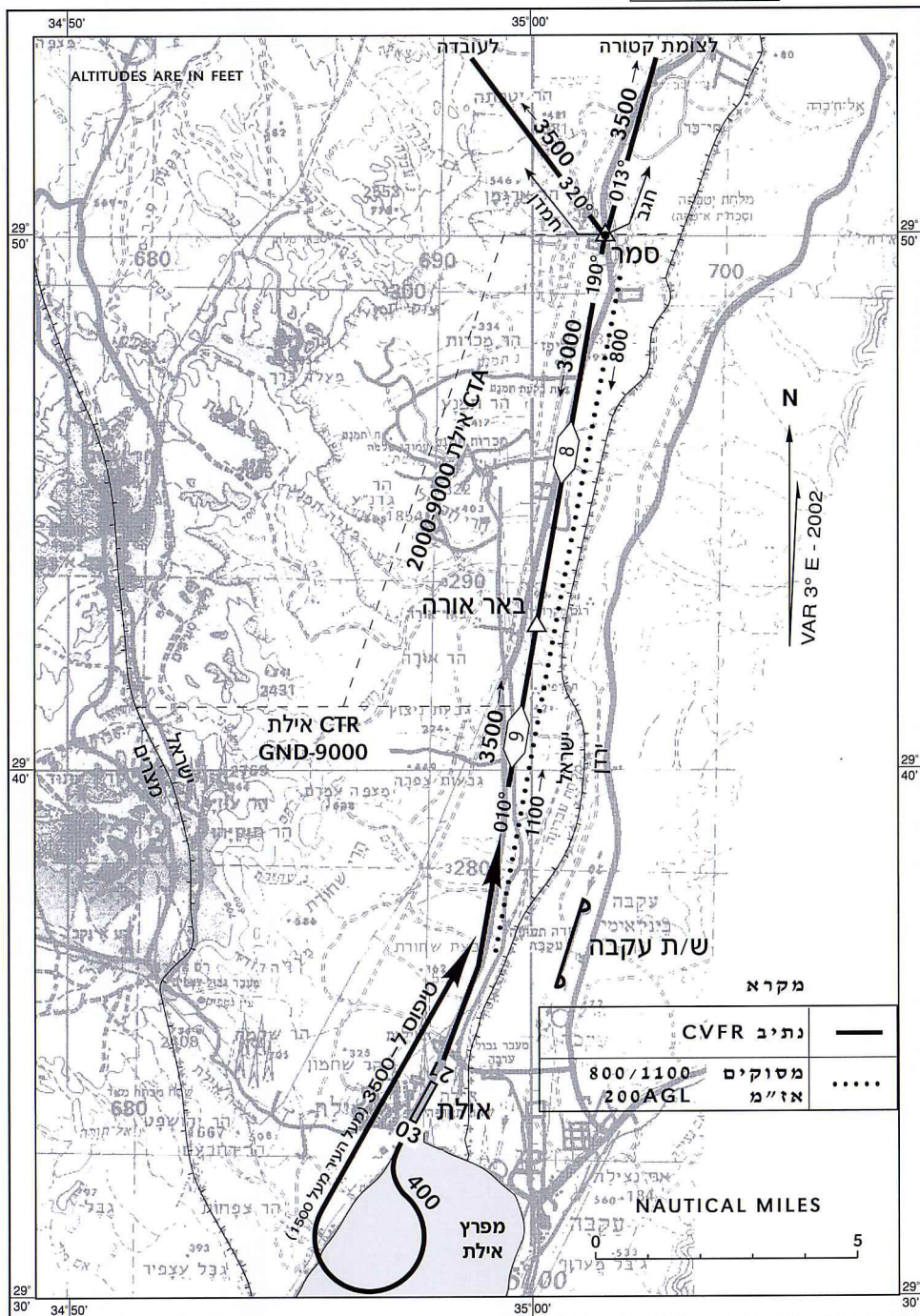
PEOPLE AND/OR VEHICLES SHALL NOT PASS BEYOND THE MOST EASTERLY LINE PAINTED ALONG THE APRON TOWARDS THE RUNWAY WITHOUT PRIOR TWR CLEARANCE AND SPECIFIC APPROVAL.

נתיבי כניסה ויציאה CVFR

AD ELEV 42 FT

121.80	אילת
124.50	חגב
129.90	חמדן

EILAT





STANDARD DEPARTURE CHART  
INSTRUMENT (SID)

TRANSITION ALTITUDE  
NIL

TWR 121.80  
119.00  
ACC 120.90

EILAT  
RWYS 03, 21  
SAMAR 1A, SAMAR 1B

**SAMAR DEPARTURES (NORTHBOUND)**

SAMAR ONE ALFA (SAMAR 1A)  
SAMAR ONE BRAVO (SAMAR 1B)

**GENERAL INSTRUCTIONS**

Due to traffic requirements, the following minimum climb gradients shall be maintained up to 6000'.

These procedures shall be in force when visibility is not less than 2000m and ceiling not below 200' AGL.

After take off RWY 03 - minimum climb gradient of 380' per NM (6.2%):

GROUND SPEED - KT	90	120	150	180	210	240
MNM ROC - FPM	570	760	950	1140	1330	1520

If unable to comply with the above climb gradient, request ATC upon receipt of start up clearance to assign a lower altitude. In this case, due to terrain maintain a minimum climb gradient of 300' per NM (5.0%) up to 4000'.

GROUND SPEED - KT	90	120	150	180	210	240
MNM ROC - FPM	450	600	750	900	1050	1200

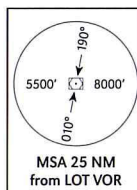
After take-off RWY 21 - minimum climb gradient of 400' per NM (6.5%):

GROUND SPEED - KT	90	120	150	180	210	240
MNM ROC - FPM	600	800	1000	1200	1400	1600

SID	RWY	TAKE-OFF	ROUTING/ALTITUDE
SAMAR 1A	03	Climb straight ahead, at 450' turn LEFT to LOT VOR DME.	Intercept and follow LOT VOR R-007 northbound to SAMAR climbing to 6000'.
SAMAR 1B	21	Climb straight ahead, at 450' turn LEFT climbing heading 190°, at 2500' turn RIGHT to LOT VOR DME (heading approx. 030°).	

BEARINGS, TRACKS AND RADIALS ARE MAGNETIC  
ALTITUDES AND ELEVATIONS ARE IN FEET  
DISTANCES IN NAUTICAL MILES.

**SAMAR**  
29° 49.3' N  
035° 01.1' E



**EILAT**  
VOR/DME 112.0  
LOT  
29° 36.5' N  
034° 58.5' E



**EILAT**  
LLZ/DME 109.7  
EL  
29° 34.5' N  
034° 58.1' E

N  
VAR 3° E - 2002

Pilots may be requested to contact TABA/intl. TOWER 120.8 during the procedure.

**COMMUNICATION FAILURE**  
1. Select mode 3 code 7600.  
2. Climb to SAMAR and proceed in accordance with FPL and follow established procedures.

SCALE

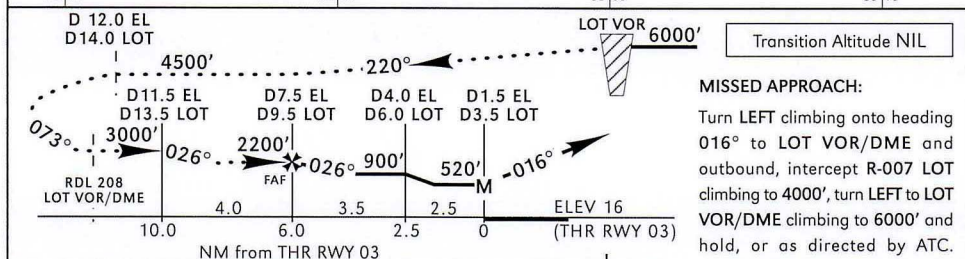
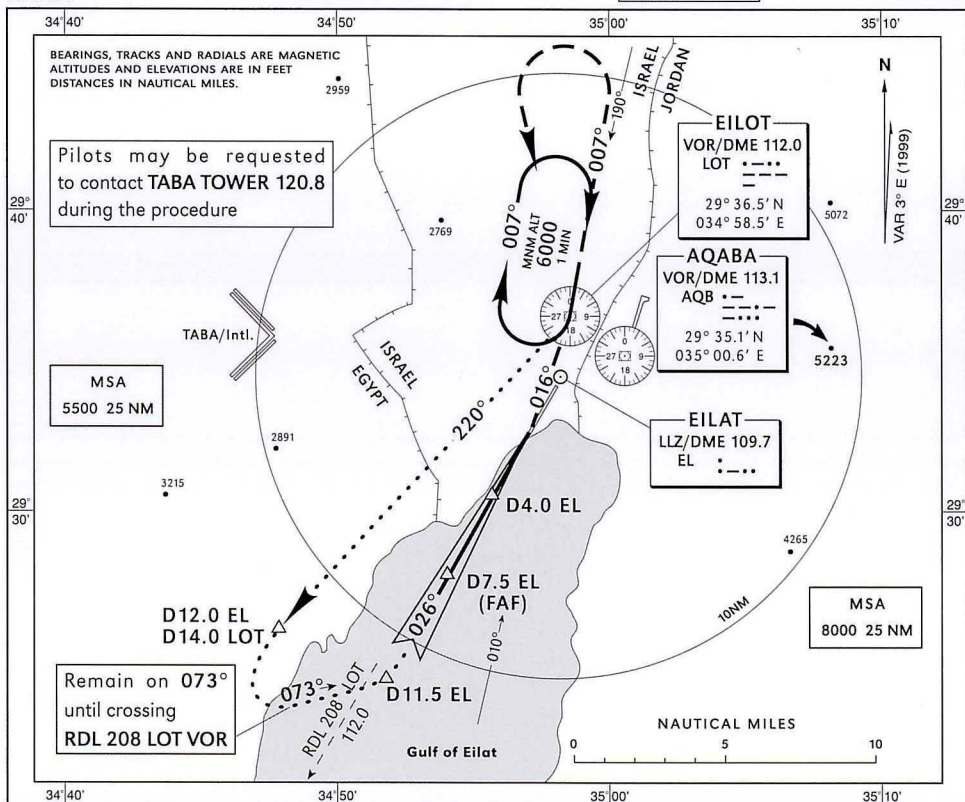
0 5 NM

### INSTRUMENT APPROACH CHART

AERODROME ELEV 42 FT  
HEIGHTS RELATED TO  
THR RWY 03 - ELEV 16 FT

ACC	120.90
TWR	121.80
	119.00

EILAT  
LLZ/DME  
RWY 03



Straight-in Approach MDA (H) 520' (504')		MAX KTS	Circling (West of Airport only)	
A	CEIL - VIS		MDA (H)	CEIL - VIS
B	520' - 1600m	90	2000' (1958')	2000' - 2000m
C	520' - 2400m	120	2000' (1958')	2000' - 2400m
D	520' - 2400m	140	2000' (1958')	2000' - 4800m
	NOT AUTHORIZED	165	NOT AUTHORIZED	

Ground speed - KTS	60	80	100	120	140
Rate of descent - FPM FAF to D4.0 EL	370	495	620	740	865

**CAUTION:**

Terrain up to 2300' 3NM west of airport

MAPT at D1.5 EL  
D3.5 LOT

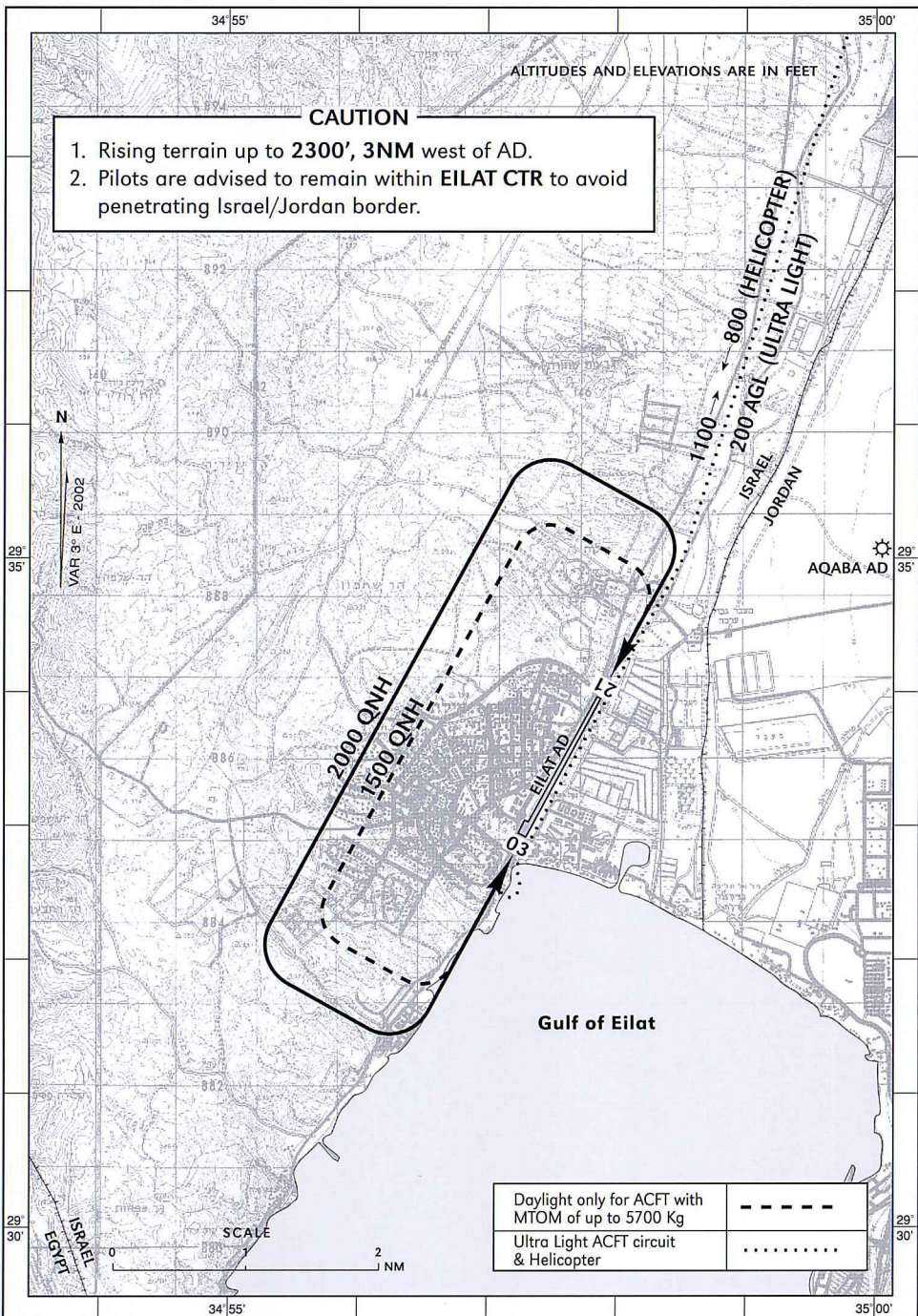


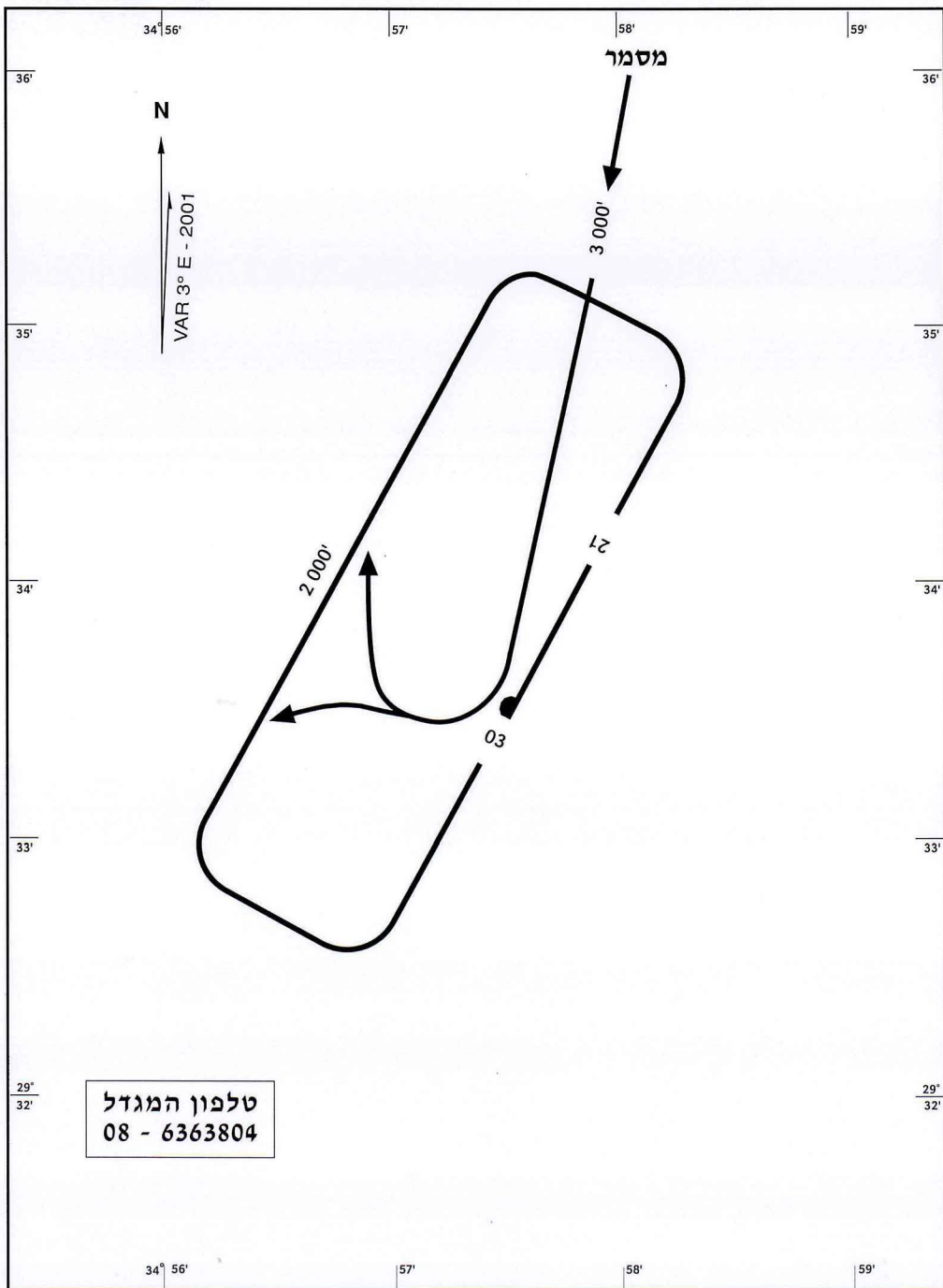
**VISUAL CIRCUIT CHART**

**AD ELEV 42 FT**

**TWR 121.80**  
**119.00**

**EILAT**





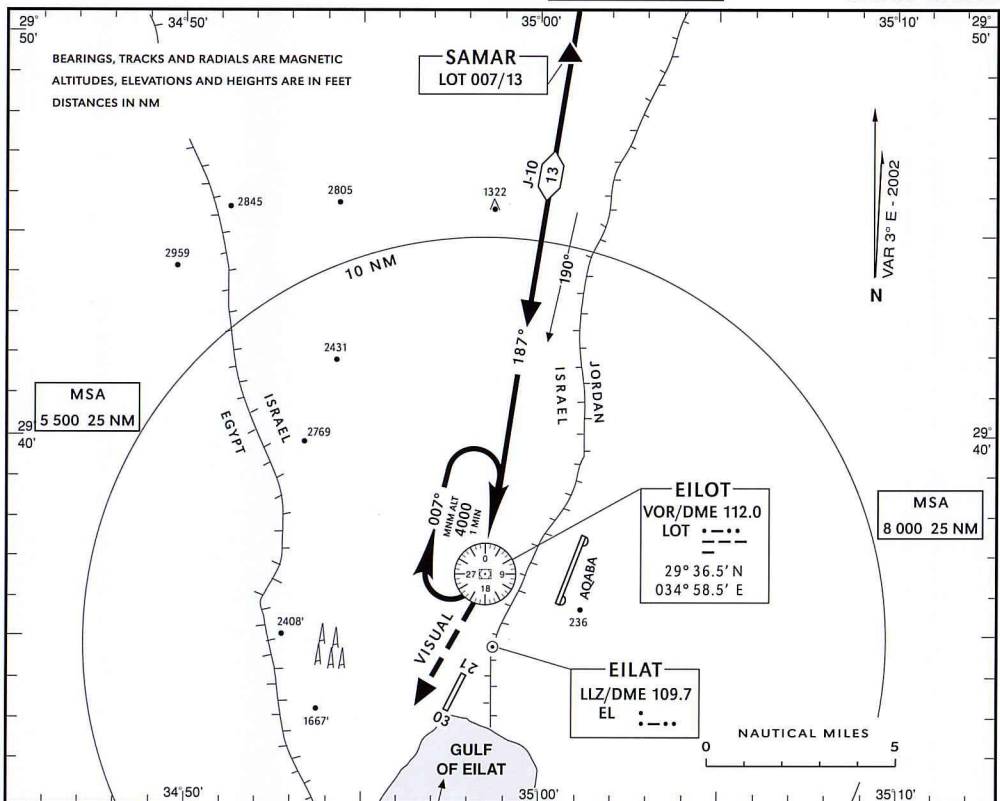
**INSTRUMENT  
APPROACH  
CHART**

AD ELEV 42 FT

ACC 120.90  
TWR 121.80  
119.00

EILAT

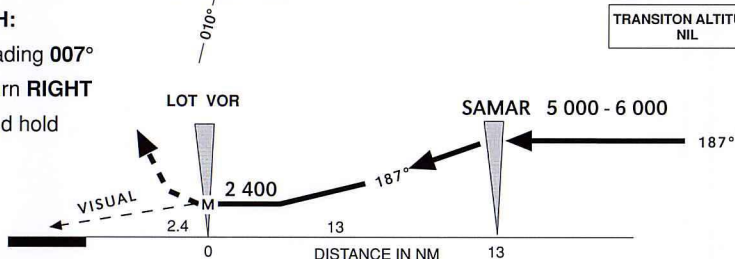
CLOUD BREAK



**MISSED APPROACH:**

Turn **RIGHT** onto heading **007°**  
climbing to **4 000'**, turn **RIGHT**  
to **LOT VOR/DME** and hold

TRANSITION ALTITUDE  
NIL



Straight-in Approach

Circling

A	NOT AUTHORIZED	A	MDA (H)			CEIL	VIS
B		B	2 400' (2 358' )			2 400' - 2 000 m	
C		C				2 400' - 2 400 m	
D		D				2 400' - 4 800 m	
Ground speed - KT		80	100	120	140	160	
From ABM SAMAR to VOR/DME		9 : 45	7 : 48	6 : 30	5 : 34	4 : 52	
MAPT at VOR							