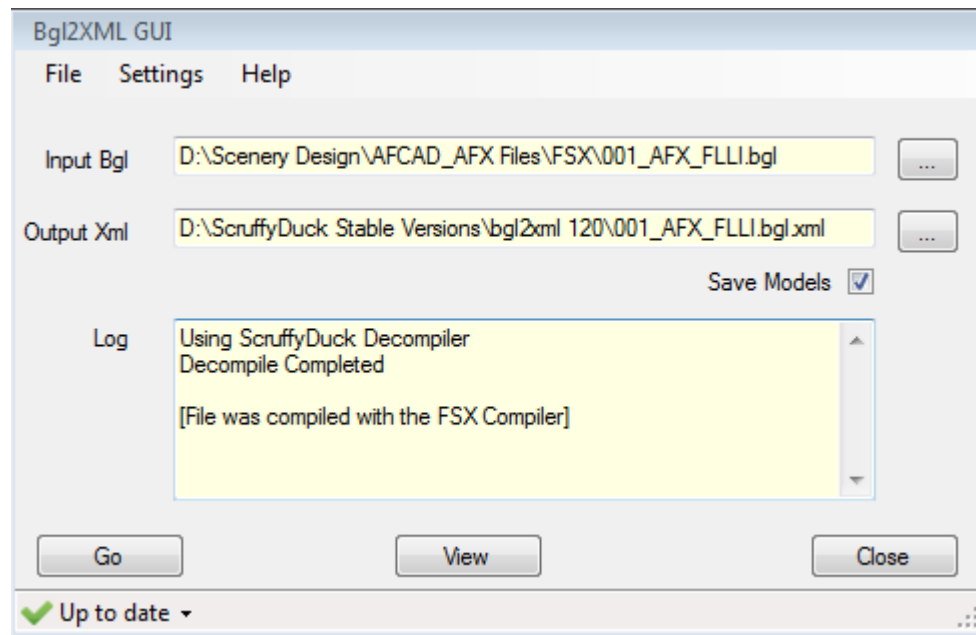


## BGL2XML OPERATING NOTES

Bgl2Xml is a decompiler for Microsoft Flight Simulators Fs9 and FSX. This comes in two versions: GUI and Command Line.

### BGL2XML GUI

Start the program by double clicking Bgl2Xml\_GUI.exe. The application has a simple interface and is easy to use.



Steps to Decompile to XML:

- Use the small button to the right of Input Bgl to navigate to and select the file to decompile
- You can accept the offered Output Xml folder. However you will probably want to save the output to another folder so use the Output Xml button to navigate to the output folder of your choice.
- If you want to extract and save any model files that may be in the file then make sure that Save Models is ticked
- Click the Go button and the decompile will take place. The results will be displayed in the log window. Bgl2Xml will automatically detect which compiler version was used for the bgl file and create XML suited to that version. The log window will tell you which. In the example above it is an FSX bgl file.

Viewing the XML:

- Click the View button. By default the program will use the Notepad.exe. However you can set your own viewer via Settings > Xml Viewer

Closing the Program:

- Click the Close Button or from the menu File > Exit.

File Menu:

- Input Bgl to select the file to decompile
- Output Xml to select the folder/filename for the output.
- View to view the XML

#### Settings Menu:

- Xml Viewer to set the program you want to use to view the xml output

#### Help Menu:

- Check for Updates will use the on-line updater to check if a newer version is available and will download and install it for you. Note that you need an active internet connection otherwise you will get an error
- About gives details of the current version.

#### Status Bar:

- At left of the status bar is the update checker. This will check once each month to see if there is an update available. If so it will tell you and you can decide if you wish to download it or not. If you are not connected to the internet then there will be an error reported. You may use this to make a manual check for updates at any time.

#### Bgl2Xml Command Line

You may use the command line or a batch file. Bgl2Xml.exe takes up to three parameters. These can be in any order. Only the source file parameter is mandatory. If path names contain spaces then the path must be enclosed in quotes ("")

/s "sourcepath" is mandatory and sets the source bgl file

/d "destinationpath" is optional and sets the destination file

/m sets whether models are extracted and saved or not /m t to extract /m f to not extract

if /d is not specified then the output xml is the in the source folder with the source filename + .xml

if /m is not specified then models will be extracted into the source folder

e.g Bgl2Xml.exe /s "C:\My Folder\source.bgl" /d "D:\Results Folder" /m f